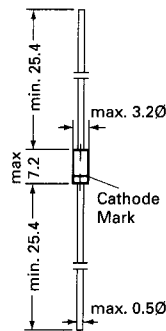


1N 60 P, 1N 60 S POINT CONTACT GERMANIUM DIODE

Point Contact Germanium Diode

1N 60 is a point contact diode employing N-form Germanium and gives an efficient and excellent linearity when used in TV image detection, FM detection, radio AM detection, etc.



Glass case JEDEC DO-7

Dimensions in mm

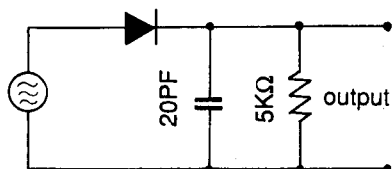
Absolute Maximum Ratings ($T_a = 25\text{ }^\circ\text{C}$)

	Symbol	Value	Unit
Peak Reverse Voltage	V_{RM}	45	V
Reverse Voltage dc	V_R	20	V
Peak Forward Current	I_{FM}	150	mA
Average Rectified Output Current	I_O	50	mA
Surge Forward Current	I_{surge}	500	mA
Junction Temperature	T_j	75	$^\circ\text{C}$
Storage Temperature Range	T_s	-55 to + 75	$^\circ\text{C}$

Characteristics (1N 60 P)

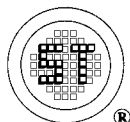
	Symbol	Test condition ($T_a 25 \pm 2\text{ }^\circ\text{C}$)	Min.	Typ.	Max.	Units
Forward Current	I_F	$V_F = 1\text{V}$	4	-	-	mA
Reverse Currents	I_R	$V_R = 10\text{V}$	-	-	50	μA
	I_R	-	-	-	100	μA
Junction Capacitance C	-	$f = 1\text{MHz}, V = -1\text{V}$	-	-	1	PF
Rectification efficiency	η	$V_i = 2\text{Vrms}, = 5\text{K}\Omega$ $C = 20\text{PF}, f = 40\text{ MHz}$	55	-	-	%

Pair $\Delta I_F \leq 6\text{ mA}$ at 1V, $\Delta I_R \leq 20\text{ }\mu\text{A}$ at 10V



Input 2Vrms

Rectification Efficiency Measurement Circuit

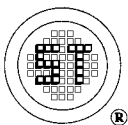
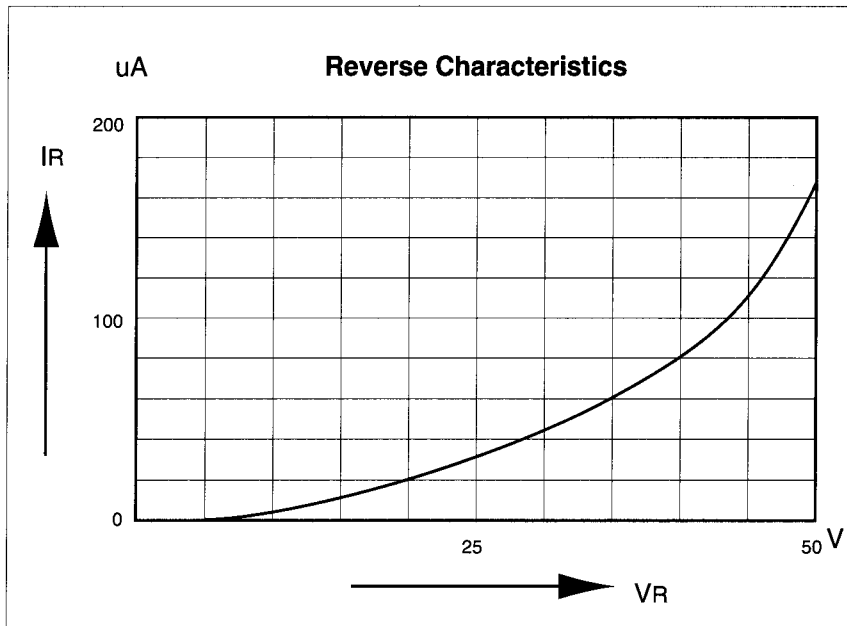
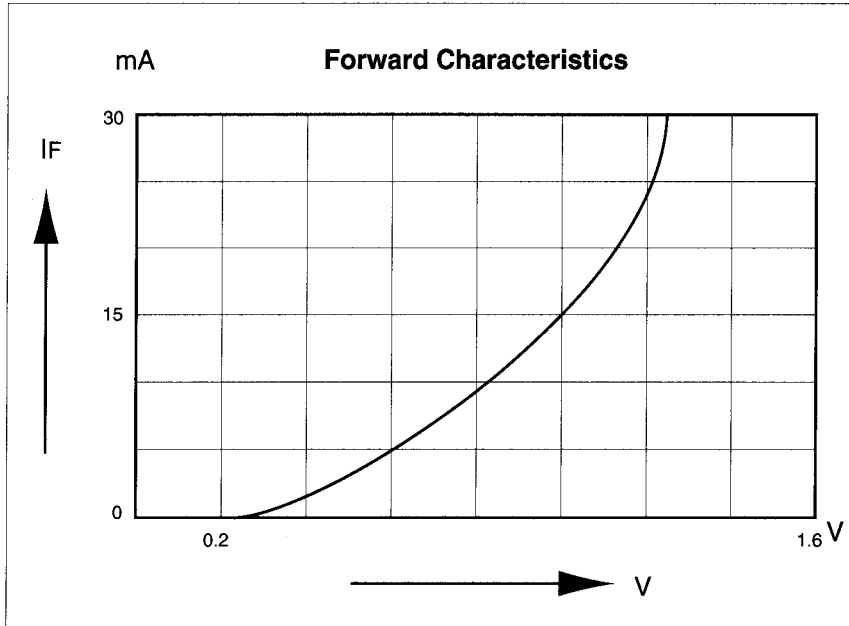


SEMTECH ELECTRONICS LTD.

(wholly owned subsidiary of HONEY TECHNOLOGY LTD.)



1N 60 P, 1N 60 S POINT CONTACT GERMANIUM DIODE



SEMTECH ELECTRONICS LTD.
(wholly owned subsidiary of HONEY TECHNOLOGY LTD.)

