

● TECHNICAL CHARACTERISTICS

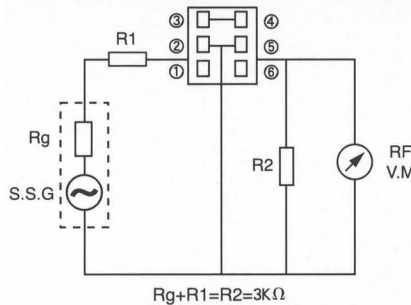
Part Number	3dB Band Width (kHz)	Selectivity	Insertion Loss (dB)	Composition
		$\pm 9\text{kHz}(\text{dB})$ $\pm 9\text{kHz}(\text{dB})\text{min}$		
LTZ455HL	4.0 ± 1	23	7	2 Elements Direct coupling Type
LTZ455JL	5.5 ± 1	18	7	

- Center Frequency(f_0) is available in range of 450~470kHz
- The nominal frequency tolerance is $\pm 2\text{kHz}$

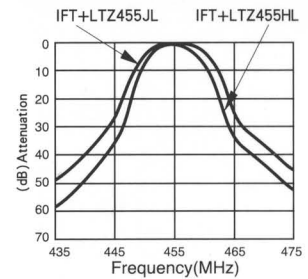
● RECOMMENDED IFT (7mm Square)

Item	Type	LTZ455HL/JL
		①~② ②~③ ④~⑥
		68T 84T 14T
unload Q_u		90
Tuning Capacity		180pF

● TEST CIRCUIT

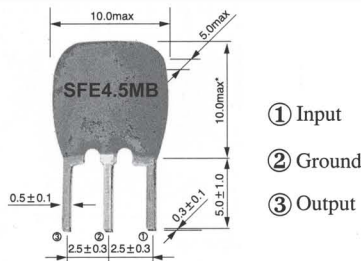


● CHARACTERISTICS



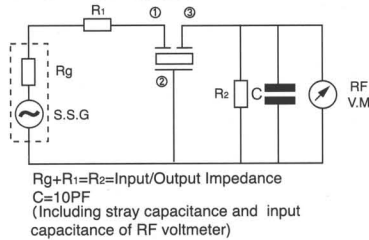
SFE Series of Ceramic Filter for TV/VCR

4.5/5.5/6.0/6.5MHz



- ① Input
- ② Ground
- ③ Output

● TEST CIRCUIT

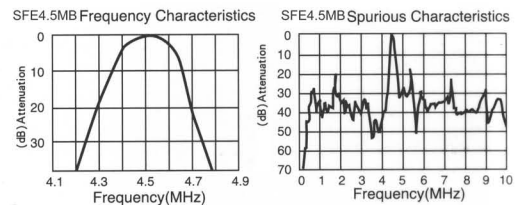


● TECHNICAL CHARACTERISTICS

Part Number	3dB Band Width (kHz) min	20dB Band Width (kHz) max	Insertion Loss (dB) max	Spurious Response (dB) min	Input/Output Impedance (Ω)
SFE4.5MB	$\pm 60(\pm 105)$	530(420)	6(4)	20(4.5 ^{+0.8} _{-1.0} MHz)	1000
SFE5.5MB	$\pm 75(\pm 120)$	550(470)	6(3)	25(5.5 ± 1.0 MHz)	600
SFE6.0MB	$\pm 80(\pm 130)$	600(500)	6(2.5)	25(6.0 ± 1.0 MHz)	470
SFE6.5MB	$\pm 80(\pm 130)$	630(530)	6(2.5)	25(6.5 ± 1.0 MHz)	470

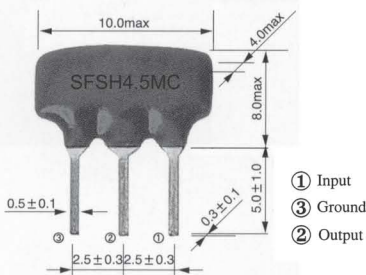
() : Typical Value

● CHARACTERISTICS



SFSH Series of Ceramic Filter for TV/VCR

4.5/5.5/6.0/6.5MHz



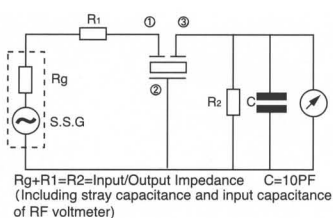
- ① Input
- ③ Ground
- ② Output

● TECHNICAL CHARACTERISTICS

Part Number	3dB Band Width (KHz)	20dB Band Width (KHz)	Insertion Loss (dB) (max)	Spurious Response (dB) (min)	Input / Output Impedance(Ω)
SFSH4.5MCB	$\pm 60(\pm 110)$	600(470)	6.0	30	1000
SFSH5.5MCB	$\pm 60(\pm 115)$	600(500)	6.0	30	600
SFSH6.0MCB	$\pm 60(\pm 115)$	600(500)	6.0	30	470
SFSH6.5MCB	$\pm 70(\pm 115)$	600(530)	6.0	30	470

() : Typical Value

● TEST CIRCUIT



● CHARACTERISTICS

