



TEF668X

Low IF Tuner High performance One-chip

Rev. 6 — 3 July 2015

Product data sheet



1. General description

The Low IF Tuner High performance One-chip family TEF668X, are single-chip radio ICs including an AM/FM radio tuner and software-defined radio signal processing. This family extends NXP Semiconductors broad, industry-proven car radio single tuner portfolio. The TEF668X offers outstanding radio performance with the widest range of features and state of the art software algorithms at optimized system costs.

The high-end single tuner family are available in HVQFN32 packages occupying the smallest PCB space and are suitable for dual- and multi-layer PCB applications.

The radio receiver includes:

- FM/AM front ends
- Tuning synthesizer
- Channel filtering
- FM Channel Equalization
- FM multipath improvement
- Demodulation
- FM stereo decoding
- Weak signal processing
- Noise blanking
- RDS
- Provides an interface to a DARC demodulator/decoder

The TEF6687 and TEF6689 include an additional high-end feature, FMSI, which noticeably enhances the stereo performance of the receiver.

The tuner family can provide stereo audio in digital format on the I²S outputs and on the audio DAC outputs. The TEF6688 and TEF6689 support the digital radio standards HD Radio and Digital Radio Mondiale (DRM) when used with NXP Semiconductors digital radio coprocessors such as SAF356X and SAF360X.

2. Features and benefits

- Alignment free digital receiver including tuner and software-defined radio processing



- Command based high-level user interface combining high control flexibility with ease of control
- Read information with device and tuning status, reception quality and RDS data
- FM receiver with a tuning range of 65 MHz to 108 MHz covering Eastern European (OIRT), Japanese, European and US bands
- AM receiver covering LW, MW and full SW
- Fully integrated tuning system with low phase noise and fast tuning
- FM LNA with AGC
- FM Stereo Improvement algorithm - FMSI (TEF6687 and TEF6689)
- State-of-the-art FM Improved Multipath Suppression
- FM Channel Equalization
- Soft Mute on Modulation
- Stereo High Blend
- FM mixer for frequency conversion to a low IF complex signal
- AM LNA with AGC, matching active and passive antenna applications
- AM mixer for frequency conversion to a low IF complex signal (AM SW)
- High dynamic range Sigma Delta IF ADC
- Digital IF signal processing including decimation, shift to baseband, AGC control, I/Q correction, variable IF bandwidth filtering (PACS) and demodulation
- FM stereo decoding
- TEF6688 and TEF6689 baseband I²S output supporting HD Radio and DRM¹ with external digital radio coprocessor (SAF356X or SAF360X)
- Blending function for HD Radio reception (TEF6688 and TEF6689)
- AM and FM noise blanking, Signal quality detection and weak signal processing
- Advanced RDS and RBDS demodulation and decoding
- MPX output supporting DARC demodulator
- One I²S input and one I²S output
- Two mono audio DACs
- Single 3.3 V supply voltage
- Fast mode I²C-bus (400 kHz)
- Configurable GPIO pins for RDS, Quality Status Interrupt and generic I²C-bus controlled I/O
- Qualified in accordance with AEC-Q100

3. Applications

The TEF668X is a single tuner AM/FM receiver for automotive applications and supports analog AM/FM and HD/DRM reception (HD/DRM is supported in TEF6688 and TEF6689 only).

Additionally, due to a common technology platform, the TEF668X can be combined with TEF701X, SAF775X and SAF360X.

1. DRM includes DRM30 and DRM+ (band I and II)

4. Functionality

Table 1. Feature set

Features	TEF6686	TEF6687	TEF6688	TEF6689
Standard				
Digital to Analog converters (stereo audio DAC)	1	1	1	1
Audio I ² S			Yes	
HD Radio	-	-	Yes	Yes
DRM	-	-	Yes	Yes
FM			Yes	
LW - MW			Yes	
SW			Yes	
Standard Radio features				
RDS demodulator and decoder			Yes	
FM PACS			Yes	
Softmute			Yes	
HighCut			Yes	
Stereo Blend			Yes	
Advanced Radio features				
Dynamic LowCut			Yes	
AM IF noise blanking			Yes	
High-end Radio features				
Improved Multipath Suppression (IMS)			Yes	
Channel equalizer			Yes	
FMSI	-	Yes	-	Yes
Softmute on modulation			Yes	
High blend			Yes	

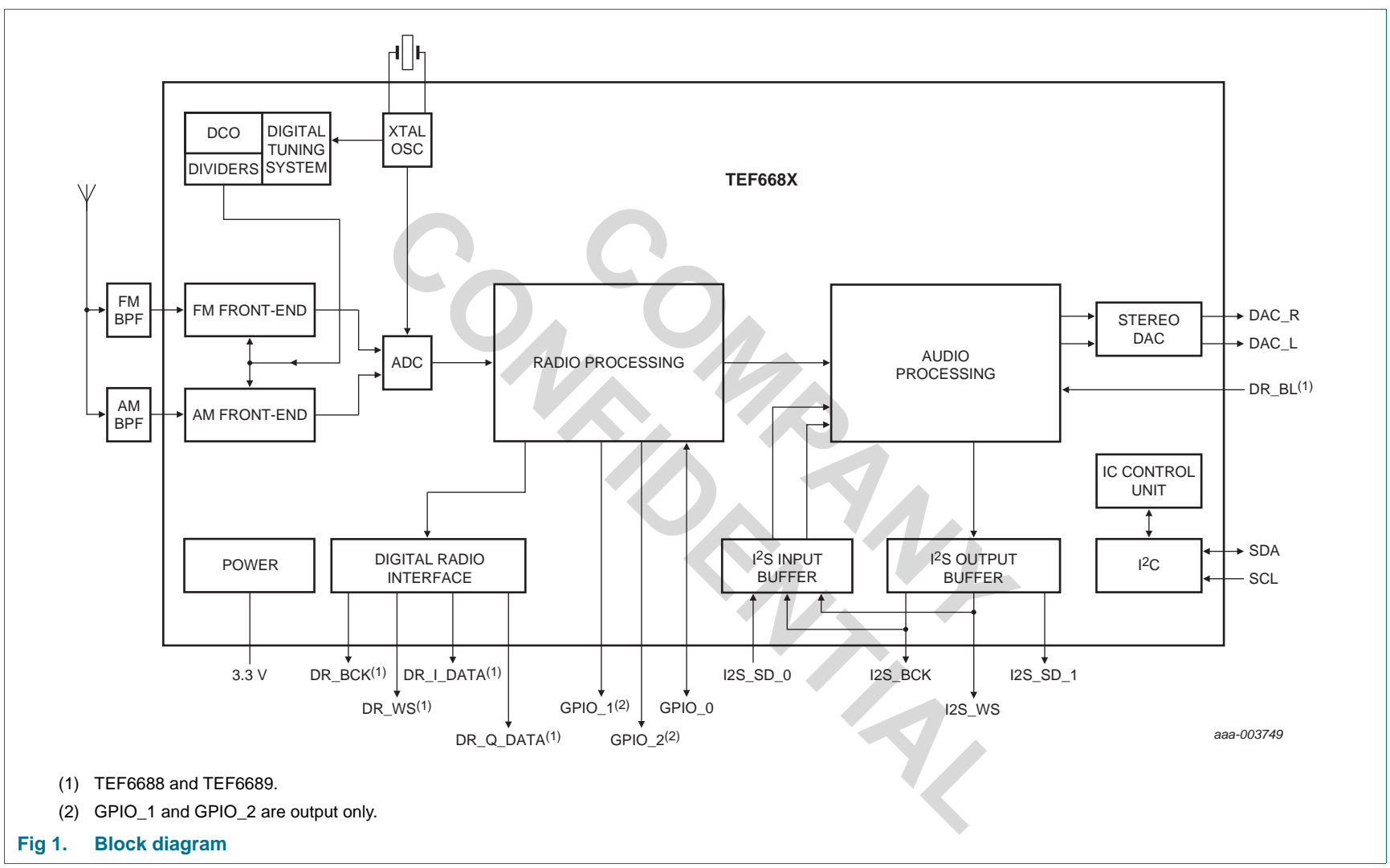
5. Ordering information

Table 2. Ordering information

Type number	Package		Version
	Name	Description	
TEF6686HN/V101	HVQFN32	plastic thermal enhanced very thin quad flat package; no leads; 32 terminals; body 5 × 5 × 0.85 mm ^[1]	SOT617-3
TEF6686HN/V102			
TEF6687HN/V102			
TEF6688HN/V101			
TEF6688HN/V102			
TEF6689HN/V102			

[1] Wettable sides to allow for optical inspection.

6. Block diagram



(1) TEF6688 and TEF6689.
 (2) GPIO_1 and GPIO_2 are output only.

Fig 1. Block diagram

7. Pinning information

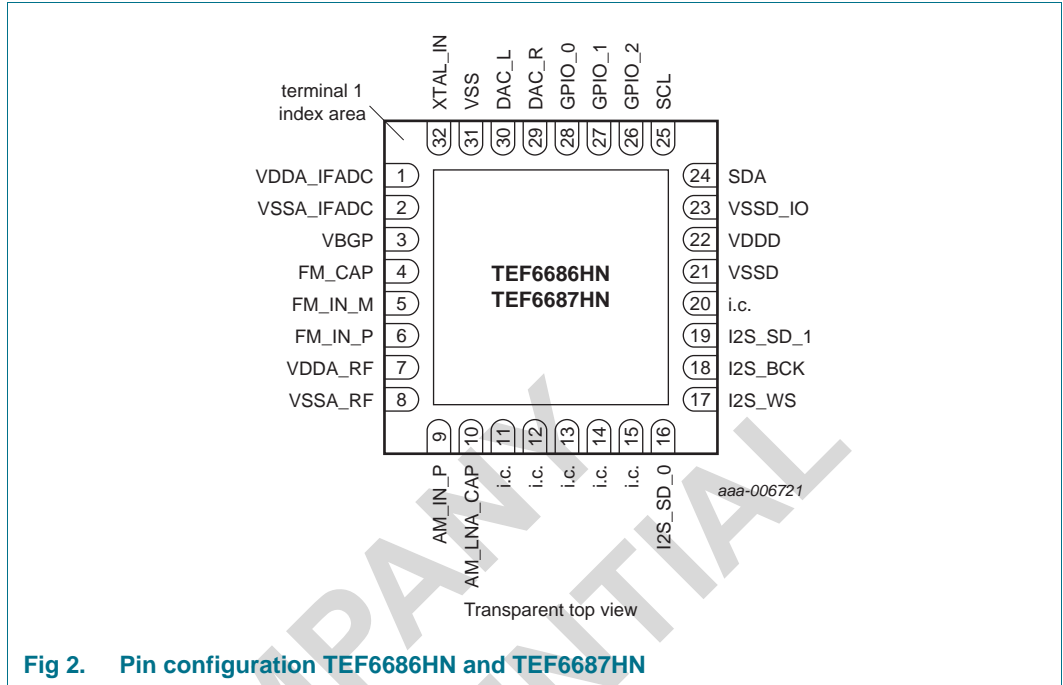


Fig 2. Pin configuration TEF6686HN and TEF6687HN

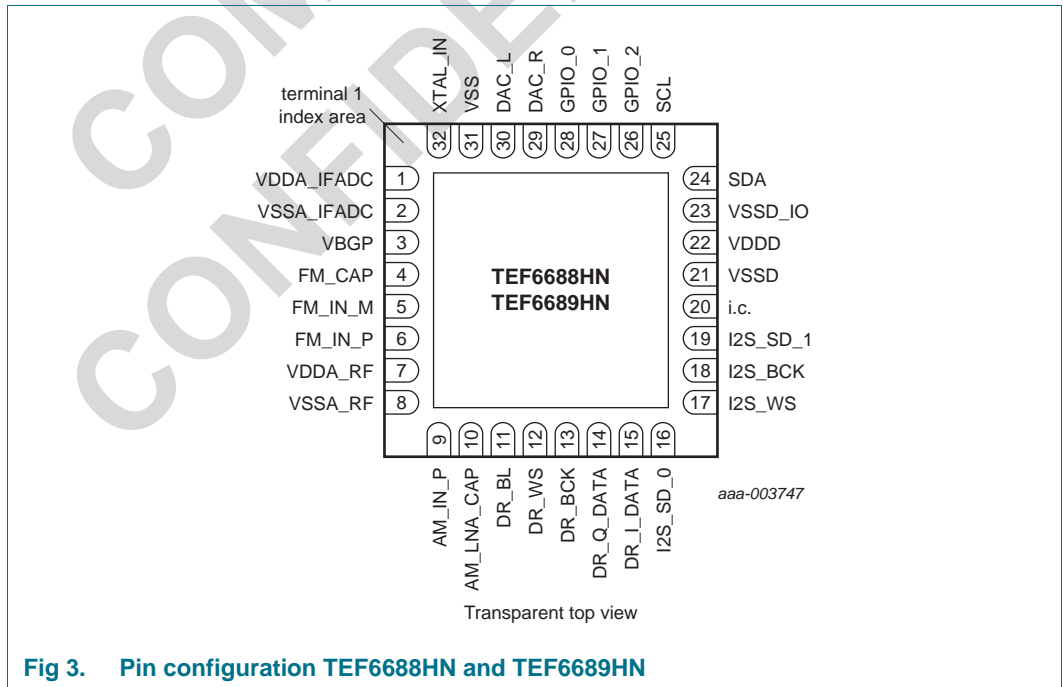


Fig 3. Pin configuration TEF6688HN and TEF6689HN

7.1 Pin description

Table 3. Pin description

Symbol	TEF6686/ TEF6687	TEF6688/ TEF6689	Pull-up or pull-down ^[1]	Type ^[2]	Description
	Pin	Pin			
VDDA_IFADC	1	1	n.a.	AP	IF analog supply voltage
VSSA_IFADC	2	2	n.a.	AG	IF analog ground supply voltage
VBGP	3	3	n.a.	AR	bandgap reference voltage decoupling
FM_CAP	4	4	n.a.	AI	FM AGC capacitor
FM_IN_M	5	5	n.a.	AI	negative FM RF input
FM_IN_P	6	6	n.a.	AI	positive FM RF input
VDDA_RF	7	7	n.a.	AP	RF analog supply voltage
VSSA_RF	8	8	n.a.	AG	RF analog ground supply voltage
AM_IN_P	9	9	n.a.	AI	positive AM LNA input
AM_LNA_CAP	10	10	n.a.	AI	AM LNA AGC capacitor
i.c.	11	-	-	-	internally connected, leave open
DR_BL	-	11	n.a.	I	HD Radio signal FM blend
i.c.	12	-	-	-	internally connected, leave open
DR_WS	-	12	n.a.	O	digital radio word select output
i.c.	13	-	-	-	internally connected, leave open
DR_BCK	-	13	n.a.	O	digital radio bit clock output
i.c.	14	-	-	-	internally connected, leave open
DR_Q_DATA	-	14	n.a.	O	serial data output for digital radio quadrature-phase data
i.c.	15	-	-	-	internally connected, leave open
DR_I_DATA	-	15	n.a.	O	serial data output for digital radio in-phase data
I2S_SD_0	16	16	D	I/O	I ² S data
I2S_WS	17	17	D	I/O	I ² S word select input/output ^[3]
I2S_BCK	18	18	D	I/O	I ² S bit clock input/output ^[3]
I2S_SD_1	19	19	D	I/O	I ² S data
i.c.	20	20	-	-	internally connected, leave open
VSSD	21	21	n.a.	G	3.3 V ground digital supply voltage
VDDD	22	22	n.a.	P	3.3 V digital supply voltage
VSSD_IO	23	23	n.a.	G	digital input/output ground connection
SDA	24	24	n.a.	I ² C	I ² C-bus serial data input and output
SCL	25	25	n.a.	I ² C	I ² C-bus serial clock input
GPIO_2	26	26	n.a.	O	general purpose output 2
GPIO_1	27	27	n.a.	O	general purpose output 1
GPIO_0	28	28	n.a.	I/O	general purpose input/output
DAC_R	29	29	n.a.	AO	right channel audio output

Table 3. Pin description ...continued

Symbol	TEF6686/ TEF6687	TEF6688/ TEF6689	Pull-up or pull-down ^[1]	Type ^[2]	Description
	Pin	Pin			
DAC_L	30	30	n.a.	AO	left channel audio output
VSS	31	31	n.a.	G	ground connection
XTAL_IN	32	32	n.a.	AI	crystal oscillator input

[1] D means internal weak pull-down of 50 kΩ; n.a. is non-applicable.

[2] The pin types are defined in [Table 4](#).

[3] Pins are either both inputs or both outputs.

Table 4. Pin type description

Type	Description
AI	analog input pin
AG	analog ground pin
AO	analog output pin
AP	analog power pin
AR	analog reference pin
G	ground pin
I	input
I/O	input or output
I ² C	I ² C-bus pin; 3.3 V tolerant
O	output
P	power supply pin

8. Functional description

8.1 FM front end to IF ADC input

An external wideband band-pass RF filter filters the RF input signal from the antenna. The RF filter passes the complete FM band of interest and provides impedance transformation for the antenna impedance matching.

The RF filter output signal is applied to the high dynamic range FM LNA. The integrated AGC loop controls the LNA gain. The AGC range is seven steps of 6 dB. The input impedance of the LNA remains constant over the first five AGC steps and is reduced for the last two AGC steps.

The signal from the LNA is converted to a low IF using a complex mixer which includes image rejection. The IF signal from the mixer is amplified and filtered before the IF ADC digitizes the IF signal.

8.2 AM front end to IF ADC input

An external high-pass filter and an FM frequency band reject filter are used to filter the RF input signal from the antenna. The high-pass filter attenuates 50 Hz/60 Hz signals from power supply lines. The band reject filter or FM intrusion filter attenuates the FM signals before entering the AM LNA, preventing intermodulation from two FM signals degrading AM reception.

After filtering, the RF signal is applied to the AM LNA. The gain of the AM LNA can be controlled with up to ten 6 dB steps by the integrated AGC loop. The input capacitance of the AM LNA is constant over the first seven AGC steps and is reduced for the last three AGC steps.

In AM LW and MW mode, the LNA output signal is filtered before being applied to the IF ADC. The lack of frequency conversion eliminates performance limitations due to reception of image and harmonic LO frequencies.

In AM SW mode, the LNA output signal is filtered and applied to a complex image reject mixer for frequency conversion to low IF. This IF signal is amplified and filtered before the IF ADC digitizes it.

8.3 Tuning system

The PLL tuning system provides the LO signal to drive the AM-SW and FM mixer for frequency conversion to low IF. The tuning system can tune to the US, European, Japanese, and OIRT FM bands and the full AM SW band. The tuning system combines low phase noise with fast tuning times.

8.4 IF ADC

A high dynamic range sigma-delta IF ADC digitizes the IF signal. Due to the high dynamic range, there is no need for narrowband IF filtering. The IF ADC provides two bitstreams (I and Q data) to the radio processing block.

8.5 Radio processing

Radio processing performs the following functions:

- Decimation of the IF ADC bit streams
- Shift to baseband
- AGC compensation
- Linear AGC detection and control
- I/Q error detection and correction
- Interface to terrestrial digital radio processor for HD Radio or DRM reception (TEF6688 and TEF6689)
- Channel filtering
- AM/FM demodulation
- Ignition noise detection and correction
- FM stereo decoding with FMSI (TEF6687 and TEF6689)
- Programmable de-emphasis

- Quality detection
- Weak signal handling
- RDS/RBDS demodulation, decoding and error correction

The output of the radio processing block is a left and right digital audio signal.

8.5.1 AM mode features

The channel filter rejects adjacent channels. The bandwidth of the channel filter can be programmed.

The AM noise blanker suppresses ignition noise pulses. It consists of an IF noise blanker in front of the channel filter and an audio noise blanker after AM demodulation.

The following quality detectors are used to measure the quality of the signal reception:

- RSSI or field strength detection (level)
- Frequency offset detection
- AM modulation detection

The AM weak signal handling improves the signal quality in weak reception conditions and it consists of:

- Soft mute controlled by level and modulation
- High-cut controlled by level and modulation

8.5.2 FM mode features

The TEF668X offers the high-end features Channel Equalizer and Improved Multipath Suppression. The Channel Equalizer improves multipath reception as well as weak signal reception by using adaptive filtering.

The Improved Multipath Suppression algorithm reduces the audibility of multipath distortions.

The FMSI feature is available for the TEF6687 and TEF6689 and offers significant improved FM stereo performance. Conventional receivers blend from stereo to mono at medium signal levels of 40 dB μ V to avoid the FM stereo noise being audible. With FMSI, the stereo to mono blend is extended down to very weak signal levels of 10 dB μ V without excessive stereo noise.

The channel filter rejects adjacent channels. The FM PACS algorithm dynamically controls the variable bandwidth of the channel filter. The bandwidth depends on the adjacent channel conditions and properties of the desired signal such as modulation and signal strength. The noise blanker detects and suppresses ignition noise pulses.

The following quality detectors are used to measure the quality of the signal reception:

- RSSI or field strength detection (level)
- Frequency offset detection
- Multipath and adjacent channel detection by USN detection
- Multipath detection by WAM detection
- Frequency deviation by modulation detection

- Stereo pilot detection

The FM weak signal handling improves the signal quality under weak signal and multipath conditions and it consists of:

- Soft mute controlled by level, USN and WAM
- HighCut/LowCut controlled by level, USN, WAM and modulation
- Stereo blend controlled by level, USN, WAM and modulation
- Stereo HighBlend controlled by level, USN, WAM and modulation

8.5.3 RDS/RBDS

An RDS demodulator and RDS decoder processes the data received from RDS and RBDS transmissions with excellent RDS sensitivity.

8.5.3.1 RDS demodulator

The RDS demodulator includes optimized filtering and linear signal processing that allows very good RDS sensitivity. The MPX signal is filtered for selection of the 57 kHz RDS signal and data shaping. The RDS demodulator data is fed into the RDS decoder for further processing. To support available software stacks, the RDS demodulator data can also be read directly via the I²C-bus or GPIO pins.

8.5.3.2 RDS decoder

The RDS decoder provides synchronization to the block and group structure of the demodulated RDS data stream. When synchronized, the decoder delivers data in a fixed ABCD group order for easy software handling. In the background, synchronization search continues for fast correction on bit slip or other synchronization errors. Extended error detection and correction are included.

An I²C register indicates the availability of a new group. An interrupt signal 'data available' can be provided on a GPIO pin.

'Data available' is indicated whenever a new group is received (that is at reception of block D). For fast PI code reception, at synchronization start 'data available' is flagged on reception of the first PI code, such as block A or block C'.

8.5.4 Digital radio interface

For HD Radio and DRM reception (TEF6688 and TEF6689), the baseband signal is output to an external digital radio coprocessor, such as the NXP Semiconductors SAF356X or SAF360X. The baseband I²S output includes a Bit Clock (BCK), Word Select (WS) and the in-phase and quadrature-phase data signals (I-data and Q-data).

8.6 Audio input

One I²S audio input is available supporting sample rates 44.1 kHz and 48 kHz.

8.7 Audio processing

The audio processing block has the following features:

- Volume control including mute
- HD Radio blending (TEF6688 and TEF6689)

8.8 Audio output

The audio output includes two mono DACs and one I²S audio output supporting sample rates 44.1 kHz and 48 kHz.

8.9 Crystal oscillator and external clock interface

In a stand-alone AM/FM application, the digital radio interface is not used. The crystal oscillator can be used with a fundamental mode crystal with a frequency of 4.000 MHz, 9.216 MHz or 12.000 MHz. In a system using digital radio coprocessor SAF356X or SAF360X, the crystal for the TEF6688 and TEF6689 must be 9.216 MHz or 12.000 MHz.

Instead of the stand-alone operation with a dedicated crystal, the TEF668X can also operate on an external supplied clock reference of 55.46667 MHz.

8.10 I²C-bus interface

The TEF668X is controlled with the I²C-bus interface. The I²C-bus interface supports the fast mode of 400 kbit/s in accordance with the I²C-bus specification.

The voltage levels on GPIO_2 pin during power-up, define the I²C address selection. The I²C address is C8h (default) or can be configured to be CAh. The I²C address selection table is defined in the application note [Ref. 7](#)

A logic 0 requires a 10 k Ω pull-down resistor to connect to ground. For a logic 1, the pin must be connected to the 3.3 V supply voltage by a 10 k Ω pull-up resistor.

9. I²C-bus protocol

The user manual [Ref. 8](#) describes the software control interface for the TEF668X.

9.1 Write mode

Standard write transmissions to the TEF668X consist of an I²C-bus start condition and an 8-bit hardware device address for write as defined by the I²C-bus standard. Next, an 8-bit module identifier for FM, AM, audio, system and other parts. An 8-bit command identifier and an 8-bit parameter index, followed by one or more 16-bit parameters, indicates control.

Writing data to inactive modules is supported and this data is stored. Stored data is used upon activation of the module.

9.2 Read mode

Standard read transmissions from the TEF668X consist of writing a read request followed by the actual read transmission to obtain data.

Remark: The I²C-bus standard does not allow read addressing within a read transmission.

Received data or status information is read using special Get commands that include an index setting similar to Write definitions. Write definitions are required for reading large data blocks and for future expansion.

A command with index 0 returns the module and command value. These commands are useful to allow for instances where requested data cannot be returned in time due to internal data handling delays.

In special cases, Get commands with index 0 or 1 require data to be read from the start. Read data with index is useful to read data blocks of a particular size, in case read buffers have limited size.

COMPANY
CONFIDENTIAL

10. Overview of commands

Table 5. Write commands overview

Module	Command number	Command name	Parameter 1	Parameter 2	Parameter 3	Parameter 4	Parameter 5	Parameter 6	Parameter 7
FM/AM	1	Tune_To	mode	frequency (kHz)	-	-	-	-	-
FM	2	Set_Tune_Options	afu_bw mode	afu_bandw (kHz)	mute_time (ms)	sample_time (ms)	-	-	-
FM/AM	10	Set_Bandwidth	mode	bandwidth (kHz)	sensitivity (%)	lo_sensitivity (%)	-	-	-
FM/AM	11	Set_RFAGC	start (dB μ V)	extension	-	-	-	-	-
AM	12	Set_Antenna	attenuation (dB)	-	-	-	-	-	-
FM	20	Set_MphSuppression	mode	-	-	-	-	-	-
FM	22	Set_ChannelEqualizer	mode	-	-	-	-	-	-
FM/AM	23	Set_NoiseBlanker	mode	sensitivity (%)	-	-	-	-	-
AM	24	Set_NoiseBlanker_Audio	mode	sensitivity (%)	-	-	-	-	-
FM/AM	30	Set_DigitalRadio ^[1]	mode (on/off)	-	-	-	-	-	-
FM	31	Set_Deemphasis	timeconstant (μ s)	-	-	-	-	-	-
FM	32	Set_StereoImprovement ^[2]	mode	-	-	-	-	-	-
FM/AM	38	Set_LevelStep	step1 (dB)	step2 (dB)	step3 (dB)	step4 (dB)	step5 (dB)	step6 (dB)	step7 (dB)
FM/AM	39	Set_LevelOffset	offset (dB)	-	-	-	-	-	-
FM/AM	40	Set_SoftMute_Time	slow_attack (ms)	slow_decay (ms)	fast_attack (ms)	fast_decay (ms)	-	-	-
AM	41	Set_SoftMute_Mod	mode	start (mod %)	slope (mod %)	shift (control %)	-	-	-
FM/AM	42	Set_SoftMute_Level	mode	start (dB μ V)	slope (dB)	-	-	-	-
FM	43	Set_SoftMute_Noise	mode	start (%)	slope (%)	-	-	-	-
FM	44	Set_SoftMute_Mph	mode	start (%)	slope (%)	-	-	-	-
FM/AM	45	Set_SoftMute_Max	mode	limit (dB)	-	-	-	-	-
FM/AM	50	Set_HighCut_Time	slow_attack (ms)	slow_decay (ms)	fast_attack (ms)	fast_decay (ms)	-	-	-

Table 5. Write commands overview ...continued

Module	Command number	Command name	Parameter 1	Parameter 2	Parameter 3	Parameter 4	Parameter 5	Parameter 6	Parameter 7
FM/AM	51	Set_HighCut_Mod	mode	start (mod %)	slope (mod %)	shift (control %)	-	-	-
FM/AM	52	Set_HighCut_Level	mode	start (dB μ V)	slope (dB)	-	-	-	-
FM	53	Set_HighCut_Noise	mode	start (%)	slope (%)	-	-	-	-
FM	54	Set_HighCut_Mph	mode	start (%)	slope (%)	-	-	-	-
FM/AM	55	Set_HighCut_Max	mode	limit (Hz)	-	-	-	-	-
FM/AM	56	Set_HighCut_Min	mode	limit (Hz)	-	-	-	-	-
FM/AM	57	Set_LowCut_Max	mode	limit (Hz)	-	-	-	-	-
FM/AM	58	Set_LowCut_Min	mode	limit (Hz)	-	-	-	-	-
FM/AM	59	Set_HighCut_Options ^[3]	mode	-	-	-	-	-	-
FM	60	Set_Stereo_Time	slow_attack (ms)	slow_decay (ms)	fast_attack (ms)	fast_decay (ms)	-	-	-
FM	61	Set_Stereo_Mod	mode	start (mod %)	slope (mod %)	shift (control %)	-	-	-
FM	62	Set_Stereo_Level	mode	start (dB μ V)	slope (dB)	-	-	-	-
FM	63	Set_Stereo_Noise	mode	start (%)	slope (%)	-	-	-	-
FM	64	Set_Stereo_Mph	mode	start (%)	slope (%)	-	-	-	-
FM	65	Set_Stereo_Max	mode	-	-	-	-	-	-
FM	66	Set_Stereo_Min	mode	limit (c.s. dB)	-	-	-	-	-
FM	70	Set_StHiBlend_Time	slow_attack (ms)	slow_decay (ms)	fast_attack (ms)	fast_decay (ms)	-	-	-
FM	71	Set_StHiBlend_Mod	mode	start (mod %)	slope (mod %)	shift (control %)	-	-	-
FM	72	Set_StHiBlend_Level	mode	start (dB μ V)	slope (dB)	-	-	-	-
FM	73	Set_StHiBlend_Noise	mode	start (%)	slope (%)	-	-	-	-
FM	74	Set_StHiBlend_Mph	mode	start (%)	slope (%)	-	-	-	-
FM	75	Set_StHiBlend_Max	mode	limit (Hz)	-	-	-	-	-
FM	76	Set_StHiBlend_Min	mode	limit (Hz)	-	-	-	-	-
FM/AM	80	Set_Scaler	gain (dB)	-	-	-	-	-	-
FM	81	Set_RDS	mode	restart	interface	-	-	-	-
FM/AM	82	Set_QualityStatus	mode	interface	-	-	-	-	-

Table 5. Write commands overview ...continued

Module	Command number	Command name	Parameter 1	Parameter 2	Parameter 3	Parameter 4	Parameter 5	Parameter 6	Parameter 7
FM/AM	83	Set_DR_Blend ^[1]	mode	in_time (ms)	out_time (ms)	gain (dB)	-	-	-
FM/AM	84	Set_DR_Options ^[1]	samplerate	mode ^[3]	format ^[3]	-	-	-	-
FM/AM	85	Set_Specials	ana_out	-	-	-	-	-	-
FM	90	Set_StBandBlend_Time ^[2]	attack	decay	-	-	-	-	-
FM	91	Set_StBandBlend_Gain ^[2]	band1	band2	band3	band4	-	-	-
FM	92	Set_StBandBlend_Bias ^[2]	band1	band2	band3	band4	-	-	-
AUDIO	10	Set_Volume	volume (dB)	-	-	-	-	-	-
AUDIO	11	Set_Mute	mode	-	-	-	-	-	-
AUDIO	12	Set_Input	source	-	-	-	-	-	-
AUDIO	13	Set_Output_Source	signal	source	-	-	-	-	-
AUDIO	21	Set_Ana_Out	signal	mode	-	-	-	-	-
AUDIO	22	Set_Dig_IO	signal	mode	format	operation	-	-	-
			samplerate	-	-	-	-	-	-
AUDIO	23	Set_Input_Scaler	source	gain (dB)	-	-	-	-	-
AUDIO	24	Set_WaveGen ^[4]	mode	offset	amplitude1	frequency1	-	-	-
			amplitude2	frequency2	-	-	-	-	-
APPL	1	Set_OperationMode	mode	-	-	-	-	-	-
APPL	3	Set_GPIO	pin	module	feature	-	-	-	-
APPL	4	Set_ReferenceClock	frequency_ msb	frequency_lsb	type	-	-	-	-
APPL	5	Activate	mode	-	-	-	-	-	-

[1] TEF6688 and TEF6689 only.

[2] TEF6687 and TEF6689 only.

[3] Only available for TEF668XHN/V102.

[4] For test purposes only.

Table 6. Read commands overview

Module	Command number	Command name	1	2	3	4
FM/AM	128	Get_Quality_Status	status	level	usn	warn
			offset	bandwidth	modulation	-
FM/AM	129	Get_Quality_Data	status	level	usn	warn
			offset	bandwidth	modulation	-
FM	130	Get_RDS_Status	status	a_block	b_block	c_block
			d_block	dec_error	-	-
FM	131	Get_RDS_Data	status	a_block	b_block	c_block
			d_block	dec_error	-	-
FM/AM	132	Get_AGC	input_att	feedback_att	-	-
FM/AM	133	Get_Signal_Status	status (stereo, digital)	-	-	-
FM/AM	134	Get_Processing_Status	softmute	highcut	stereo	sthblend
			stband_1_2 ^[1]	stband_3_4 ^[1]	-	-
FM/AM	135	Get_Interface_Status ^[2]	samplerate	-	-	-
APPL	128	Get_Operation_Status	status	-	-	-
APPL	129	Get_GPIO_Status	status (pin state)	-	-	-
APPL	130	Get_Identification	device (type, variant)	hw_version (main, sub)	sw_version	-
APPL	131	Get_LastWrite	size/module	cmd/index	parameter	parameter
			parameter	parameter	parameter	parameter

[1] TEF6687 and TEF6689 only.

[2] TEF6688 and TEF6689 only.

11. Limiting values

Table 7. Limiting values

In accordance with the Absolute Maximum Rating System (IEC 60134).

Symbol	Parameter	Conditions	Min	Max	Unit
V _{DDA(RF)3V3}	RF analog supply voltage (3.3 V)	on pin VDDA_RF	-0.5	+3.9	V
V _{DDA(IF)3V3}	IF analog supply voltage (3.3 V)	on pin VDDA_IFADC	-0.5	+3.9	V
V _{DDD(3V3)}	digital supply voltage (3.3 V)	on pin VDDD	-0.5	+3.9	V
ΔV _{DD(3V3-3V3)}	supply voltage difference between two 3.3 V supplies	between pins VDDA_IFADC and VDDA_RF	-0.3	+0.3	V
V _i	input voltage		-0.5	+V _{DDD(3V3)} + 0.3	V
I _{lu}	latch-up current	all supply voltages below the maximum value	^[1] -100	+100	mA
V _{lu}	latch-up voltage		^[2] -	1.5 × V _{DDD(3V3)}	V
T _{stg}	storage temperature		^[3] -55	+150	°C
T _{amb}	ambient temperature		-40	+85	°C
T _j	junction temperature		-40	+125	°C

Table 7. Limiting values ...continued
In accordance with the Absolute Maximum Rating System (IEC 60134).

Symbol	Parameter	Conditions	Min	Max	Unit
V _{ESD}	electrostatic discharge voltage	human body model [4]	-2000	+2000	V
		charged-device model [5]			
		corner pins	-750	+750	V
		other pins	-500	+500	V
P _{tot}	total power dissipation	V _{DDA(RF)3V3} = 3.5 V; V _{DDA(IF)3V3} = 3.5 V; V _{DDD(3V3)} = 3.5 V	-	700	mW

- [1] In accordance with AEC-Q100-004.
- [2] All pins except XTAL_IN.
- [3] Exposure for long time to very low or high temperatures may affect product reliability.
- [4] Class H2 according to AEC-Q100-002 Rev-D.
- [5] Class C4B according to AEC-Q100-011 Rev-C.

12. Thermal characteristics

Table 8. Thermal characteristics
The performance parameters are specified with center pin soldered to the board

Symbol	Parameter	Conditions	Typ	Unit
R _{th(j-a)}	thermal resistance from junction to ambient	HVQFN32 dual-layer board [1]	50	K/W
		HVQFN32 four-layer board	30	K/W

- [1] Simulation result assuming a dual layer board with a copper thickness of 35 µm; size: 50 mm x 50 mm; exposed die pad soldered to thermal landing pattern: thermal landing pattern connected to a large ground plane on the bottom layer by multiple thermal vias; copper coverages 25 % (top layer) and 90 % (bottom layer).

13. Static characteristics

Table 9. Voltage and current characteristics
In accordance with the Absolute Maximum Rating System (IEC 60134).

Symbol	Parameter	Conditions	Min	Typ	Max	Unit
Supply voltage						
V _{DDA(RF)3V3}	RF analog supply voltage (3.3 V)	on pin VDDA_RF	3.0	3.3	3.5	V
V _{DDA(IF)3V3}	IF analog supply voltage (3.3 V)	on pin VDDA_IFADC	3.0	3.3	3.5	V
V _{DDD(3V3)}	digital supply voltage (3.3 V)	on pin VDD_DIGITAL	3.0	3.3	3.5	V
Current in FM mode						
I _{DDA(RF)}	RF analog supply current	on pin VDDA_RF	33	37	42	mA
I _{DDA(IF)}	IF analog supply current	on pin VDDA_IFADC	81	94	110	mA
I _{DDD}	digital supply current	on pin VDDD	37	38	48	mA
Current in AM - MW/LW mode						
I _{DDA(RF)}	RF analog supply current	on pin VDDA_RF	34	40	48	mA
I _{DDA(IF)}	IF analog supply current	on pin VDDA_IFADC	63	74	86	mA
I _{DDD}	digital supply current	on pin VDDD	33	34	46	mA
Current in Standby mode						

Table 9. Voltage and current characteristics ...continued
 In accordance with the Absolute Maximum Rating System (IEC 60134).

Symbol	Parameter	Conditions	Min	Typ	Max	Unit
$I_{DDA(RF)}$	RF analog supply current	on pin VDDA_RF	0	0.3	2	mA
$I_{DDA(IF)}$	IF analog supply current	on pin VDDA_IFADC	25	37	45	mA
I_{DDD}	digital supply current	on pin VDDD	15	24	35	mA

14. Dynamic characteristics

Table 10. Dynamic characteristics for audio processing and audio DAC
 $V_{DDA(RF)(3V3)} = 3.3\text{ V}$; $V_{DDA(IF)(3V3)} = 3.3\text{ V}$; $V_{DDD(3V3)} = 3.3\text{ V}$; $f_s = 44.1\text{ kHz}$; $T_{amb} = 25\text{ °C}$; all AC values are given in RMS; unless otherwise specified.

Symbol	Parameter	Conditions	Min	Typ	Max	Unit
Audio processing						
G_{aud}	audio gain		-60	-	+24	dB
α_{mute}	mute attenuation		-	-	-80	dB
Audio DAC						
V_o	output voltage	at 0 dBFS digital input; $R_L = 20\text{ k}\Omega$	870	910	950	mV
R_o	output resistance		-	-	1	k Ω
$\alpha_{o(unb)(ch- ch)}$	output unbalance between channels		-0.2	-	+0.2	dB
(THD+N)/S	total harmonic distortion plus noise-to-signal ratio	0 dBFS with unweighted 20 Hz to 20 kHz audio filter; $R_L = 20\text{ k}\Omega$	-	-	-70	dB
		-60 dBFS with A-weighted audio filter; $R_L = 20\text{ k}\Omega$	-	-	-27	dB
$V_{n(o)(RMS)}$	RMS output noise voltage	in-band noise on idle channel, A-weighted	-	-	36	μV
α_{cs}	channel separation		70	-	-	dB
PSRR	power supply rejection ratio	$f_{ripple} = 1\text{ kHz}$; $V_{supply(ripple)}/V_{audio(ripple)}$	50	-	-	dB
R_L	load resistance		20	-	-	k Ω
f_{resp}	frequency response	-3 dB corner frequency related to $f_{AF} = 1\text{ kHz}$	100	-	-	kHz
		low audio	-	-	20	Hz
		high audio	18	-	-	kHz

Table 11. Dynamic characteristics for tuning system

$V_{DDA(RF)(3V3)} = 3.3\text{ V}$; $V_{DDA(IF)(3V3)} = 3.3\text{ V}$; $V_{DDD(3V3)} = 3.3\text{ V}$; $T_{amb} = 25\text{ }^{\circ}\text{C}$; all AC values are RMS; unless otherwise specified.

Symbol	Parameter	Conditions	Min	Typ	Max	Unit
Crystal oscillator						
f_{nom}	nominal frequency	stand alone, digital radio interface not used	-	4.000	-	MHz
			-	9.216	-	MHz
			[1]	12.000	-	MHz
		digital radio interface enabled	[2]	9.216	-	MHz
			[1][2]	12.000	-	MHz
Clock interface						
$f_{clk(ext)}$	external clock frequency		-	55.46667	-	MHz
$V_{i(osc)}$	oscillator input voltage	peak-to-peak	200	400	-	mV

[1] Only available for TEF668XHN/V102.

[2] Only applicable for TEF6688 and TEF6689.

Table 12. FM radio characteristics

$f = 98.1\text{ MHz}$, $\Delta f = 22.5\text{ kHz}$, $f_{AF} = 1\text{ kHz}$, $50\text{ }\mu\text{s}$ de-emphasis, IEC tuner filter $75\text{ }\Omega/6\text{ dB}$ dummy antenna, all signals in RMS at input dummy unless otherwise specified. Analog audio output at pins DAC_L and DAC_R.

Symbol	Parameter	Conditions	Min	Typ	Max	Unit
f_{RF}	RF frequency	FM tuning range	65	-	108	MHz
$V_{i(sens)}$	input sensitivity voltage	$V_{i(RF)}$ for 26 dB SNR; channel equalizer on	-	-4	0	$\text{dB}\mu\text{V}$
(S+N)/N	signal plus noise-to-noise ratio	$V_{i(RF)} = 50\text{ dB}\mu\text{V}$ to $120\text{ dB}\mu\text{V}$; mono	60	68	-	dB
		$V_{i(RF)} = 60\text{ dB}\mu\text{V}$ to $120\text{ dB}\mu\text{V}$; stereo	56	60	-	dB
$\alpha_{sup(AM)}$	AM suppression	$m = 30\%$; $f_{AF} = 1\text{ kHz}$; $V_{i(RF)} = 40\text{ dB}\mu\text{V}$ to $120\text{ dB}\mu\text{V}$	58	68	-	dB
THD	total harmonic distortion	$f_{AF} = 1\text{ kHz}$; $V_{i(RF)} = 20\text{ dB}\mu\text{V}$ to $120\text{ dB}\mu\text{V}$				
		$\Delta f = 75\text{ kHz}$; mono	-	0.01	0.1	%
		$\Delta f = 67.5\text{ kHz}$; stereo; L_{out} only	-	0.1	0.3	%
S	selectivity	$V_{RF(wanted)} = 20\text{ dB}\mu\text{V}$; $\Delta f(wanted) = 22.5\text{ kHz}$ for 0 dB reference; $f_{AF(wanted)} = 1\text{ kHz}$; $f_{RF(unw)} = f_{RF(wanted)} \pm \Delta f_{RF}$; $\Delta f(unw) = 22.5\text{ kHz}$; $f_{AF(unw)} = 1\text{ kHz}$; increase $V_{RF(unw)}$ until SNR = 26 dB; $S = V_{RF(unw)} / V_{RF(wanted)}$; channel equalizer on				
		$\Delta f_{RF} = 100\text{ kHz}$	60	67	-	dB
		$\Delta f_{RF} = 200\text{ kHz}$	70	77	-	dB
IP3	third-order intercept point	$\Delta f_{RF(unw)1} = \pm 400\text{ kHz}$; $\Delta f_{RF(unw)2} = \pm 800\text{ kHz}$	115	120	-	$\text{dB}\mu\text{V}$
IP2	second-order intercept point	$f_{RF(unw)1} = 50\text{ MHz}$; $f_{RF(unw)2} = 48\text{ MHz}$	160	180	-	$\text{dB}\mu\text{V}$

Table 12. FM radio characteristics ...continued

$f = 98.1$ MHz, $\Delta f = 22.5$ kHz, $f_{AF} = 1$ kHz, 50 μ s de-emphasis, IEC tuner filter 75 Ω -6 dB dummy antenna, all signals in RMS at input dummy unless otherwise specified. Analog audio output at pins DAC_L and DAC_R.

Symbol	Parameter	Conditions	Min	Typ	Max	Unit
$V_{i(RF)AGC(start)}$	start AGC RF input voltage	highest setting	-	92	-	dB μ V
		lowest setting	-	84	-	dB μ V
$\alpha_{cr(AGC)}$	AGC control range	internal AGC	-	40	-	dB
		external AGC	-	6	-	dB
α_{cs}	channel separation	$\Delta f = 67.5$ kHz; $f_{AF} = 1$ kHz; $\Delta f_{pilot} = 7.5$ kHz				
		$V_{i(RF)} = 20$ dB μ V [1]	-	30	-	dB
		$V_{i(RF)} = 60$ dB μ V to 120 dB μ V	45	-	-	dB
S_{RDS}	RDS sensitivity	$\Delta f_{RDS} = 2$ kHz; stereo; $\Delta f_{FM} = 22.5$ kHz; L = R; $f_{AF} = 1$ kHz				
		50 % correct blocks without error correction	-	15	19	dB μ V
		95 % correct blocks without error correction	-	18	22	dB μ V
V_o	output voltage	$V_{RF} = 60$ dB μ V	-	120	-	mV
		DARC output; $V_{RF} = 60$ dB μ V	-	150	-	mV

[1] Only applicable for TEF6687 and TEF6689.

Table 13. AM radio characteristics

$f = 990$ kHz; $m = 30$ %; $f_{AF} = 1$ kHz; IEC tuner filter 15 pF/60 pF dummy antenna; all signal levels in RMS at input dummy; unless otherwise specified. Analog audio output at pins DAC_L and DAC_R.

Symbol	Parameter	Conditions	Min	Typ	Max	Unit
f_{RF}	RF frequency	AM (LW) tuning range	144	-	288	kHz
		AM (MW) tuning range	522	-	1710	kHz
		AM (SW) tuning range	2.3	-	27.0	MHz
$V_{i(sens)}$	input sensitivity voltage	S/N = 26 dB; $B_{aud} = 2$ kHz; $f_{RF} = 990$ kHz; $m = 30$ %; $f_{AF} = 400$ Hz	-	32	36	dB μ V
(S+N)/N	signal plus noise-to-noise ratio	$V_{i(RF)} = 74$ dB μ V	60	65	-	dB
THD	total harmonic distortion	$V_{i(RF)} = 50$ dB μ V to 120 dB μ V				
		$f_{AF} = 1$ kHz; $m = 80$ %	-	0.1	0.3	%
		$f_{AF} = 400$ Hz; $m = 80$ %	-	0.1	0.3	%
		$f_{AF} = 100$ Hz; $m = 80$ %	-	0.1	0.5	%
S_{stat}	static selectivity	single signal; $\Delta f_{RF} = 10$ kHz; $f_{tune} \pm 10$ kHz	70	80	-	dB
		single signal; $\Delta f_{RF} = 20$ kHz; $f_{tune} \pm 20$ kHz	80	-	-	dB

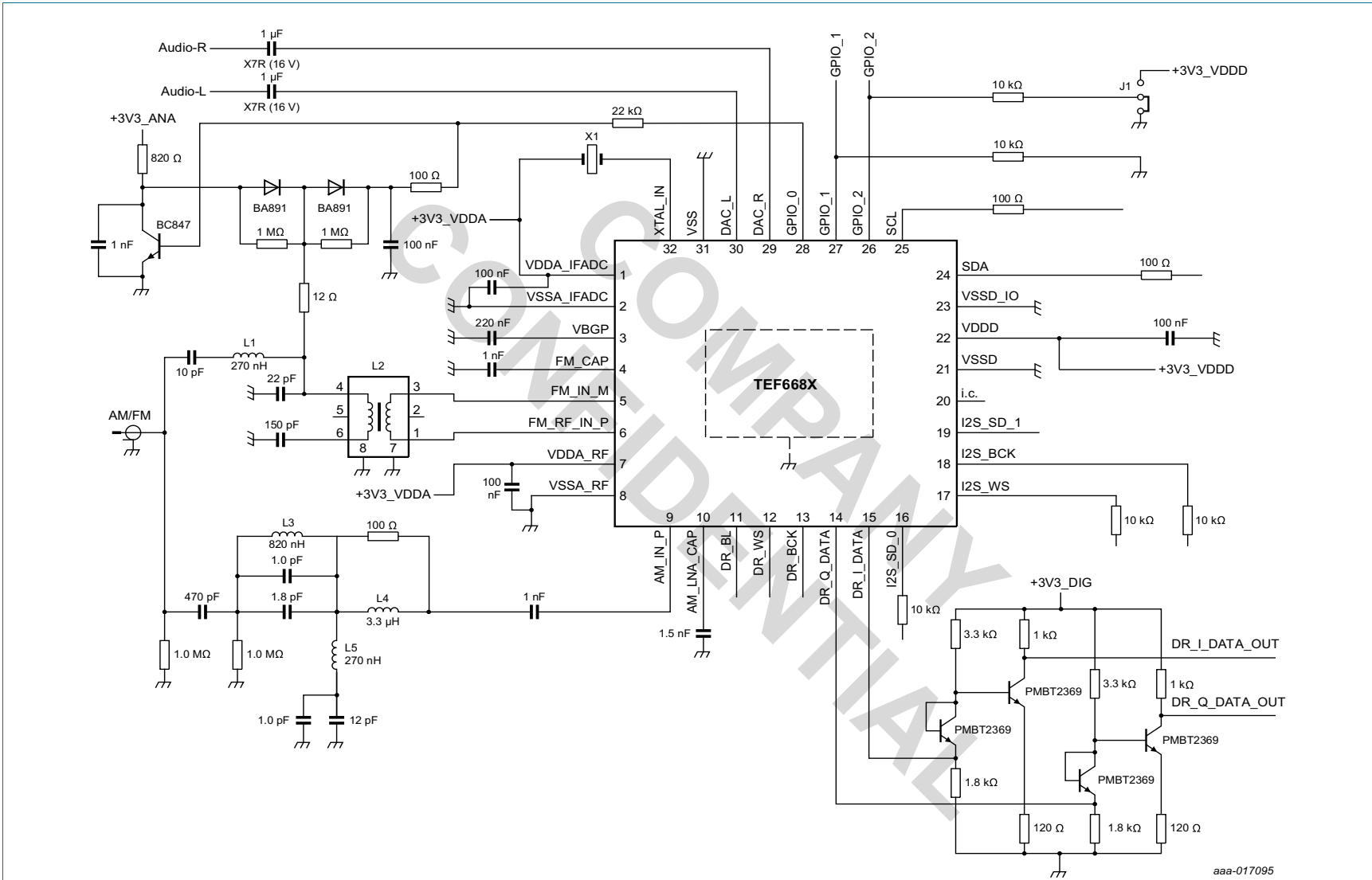
Table 13. AM radio characteristics ...continued

f = 990 kHz; m = 30 %; f_{AF} = 1 kHz; IEC tuner filter 15 pF/60 pF dummy antenna; all signal levels in RMS at input dummy; unless otherwise specified. Analog audio output at pins DAC_L and DAC_R.

Symbol	Parameter	Conditions	Min	Typ	Max	Unit
IP3	third-order intercept point	$\Delta f_{RF(unw)1} = 40 \text{ kHz};$ $\Delta f_{RF(unw)2} = 80 \text{ kHz}$	130	133	-	$\text{dB}\mu\text{V}$
		$\Delta f_{RF(unw)1} = 300 \text{ kHz};$ $\Delta f_{RF(unw)2} = 600 \text{ kHz}$	130	133	-	$\text{dB}\mu\text{V}$
IP2	second-order intercept point	$f_{RF(wanted)} = 1400 \text{ kHz};$ $f_{RF(unw)1} = 600 \text{ kHz};$ $f_{RF(unw)2} = 800 \text{ kHz}$	160	170	-	$\text{dB}\mu\text{V}$
V _o	output voltage	V _{RF} = 60 $\text{dB}\mu\text{V}$	-	100	-	mV

COMPANY
CONFIDENTIAL

15. Application information



Pins 11, 12, 13, 14 and 15 are only available for TEF6688 and TEF6689.

Fig 4. Schematic diagram

aaa-017095

Table 14. List of components for Figure 4

Symbol	Type	Series	Manufacturer
L1	C2012C-R27J	C2012C	Sagami
L2	#A1313AN-0004GGH	5CCEG	Toko
L3	C2012C-R82J	C2012C	Sagami
L4	LLM2520-3R3K	LLM2520	Toko
L5	C2012C-R27J	C2012C	Sagami
X1 ^[1]	DSX530GA (9.216 MHz)	DSX530GA	KDS

[1] For other crystal frequencies, refer to "Application note AN11254"

Table 15. DC operating points

$V_{DDA(RF)(3V3)} = 3.3\text{ V}$; $V_{DDA(IF)(3V3)} = 3.3\text{ V}$; $V_{DDD(3V3)} = 3.3\text{ V}$; $T_{amb} = 25\text{ }^{\circ}\text{C}$; unless otherwise specified.

Symbol	Pin	Unloaded DC voltage (V)					
		FM mode			AM mode		
		Min	Typ	Max	Min	Typ	Max
I2S_WS	17	-	0/3.3	-	-	0/3.3	-
I2S_BCK	18	-	0/3.3	-	-	0/3.3	-
I2S_SD_1	19	-	1.1	-	-	1.1	-
i.c.	20	-	0	-	-	0	-
GPIO_0	28	-	0/3.3	-	-	0/3.3	-
VSSA_RF	8	external GND			external GND		
AM_LNA_CAP	10	-	0	-	0.4	0.6	0.8
AM_IN_P	9	-	0	-	-	0.63	-
VSSA_IFADC	2	external GND			external GND		
VDDA_RF	7	external 3.3			external 3.3		
FM_IN_M	5	1.15	1.27	1.45	-	1.54	-
FM_IN_P	6	1.15	1.27	1.45	-	1.54	-
FM_CAP	4	-	1.27	-	-	1.54	-
XTAL_IN	32	-	2.8	-	-	2.8	-
VDDA_IFADC	1	external 3.3			external 3.3		
DAC_R	29	-	0.9	-	-	0.9	-
DAC_L	30	-	0.9	-	-	0.9	-
VSSD	21	external GND			external GND		
SCL	25	0/external I ² C-bus voltage			0/external I ² C-bus voltage		
SDA	24	0/external I ² C-bus voltage			0/external I ² C-bus voltage		
DR_Q_DATA ^[1]	14	-	0/3.3	-	-	0/3.3	-
DR_BCK ^[1]	13	-	0/3.3	-	-	0/3.3	-
I2S_SD_0	16	-	0/3.3	-	-	0/3.3	-
DR_I_DATA ^[1]	15	-	0/3.3	-	-	0/3.3	-
VDDD	22	external 3.3			external 3.3		
VBGP	3	2.42	2.55	2.67	2.42	2.55	2.67
DR_BL ^[1]	11	-	0/3.3	-	-	0/3.3	-
VSS	31	external GND			external GND		

Table 15. DC operating points ...continued

$V_{DDA(RF)(3V3)} = 3.3\text{ V}$; $V_{DDA(IF)(3V3)} = 3.3\text{ V}$; $V_{DDD(3V3)} = 3.3\text{ V}$; $T_{amb} = 25\text{ }^{\circ}\text{C}$; unless otherwise specified.

Symbol	Pin	Unloaded DC voltage (V)					
		FM mode			AM mode		
		Min	Typ	Max	Min	Typ	Max
DR_WS ^[1]	12	-	0/3.3	-	-	0/3.3	-
VSSD_IO	23	external GND			external GND		
GPIO_2	26	-	0/3.3	-	-	0/3.3	-
GPIO_1	27	-	0/3.3	-	-	0/3.3	-

[1] This pin is internally connected for the TEF6686 and TEF6687. The function is only available in TEF6688 and TEF6689.

16. Test information

16.1 Quality information

This product has been qualified in accordance with the Automotive Electronics Council (AEC) standard Q100 - *Failure mechanism based stress test qualification for integrated circuits*, and is suitable for use in automotive applications.

17. Package information

No tracks are permitted on the PCB top layer beneath the pin 1 marker. Refer to [Ref. 7](#) for more detailed information regarding package and PCB layout guidelines.

18. Package outline

HVQFN32: plastic thermal enhanced very thin quad flat package; no leads;
32 terminals; body 5 x 5 x 0.85 mm

SOT617-3

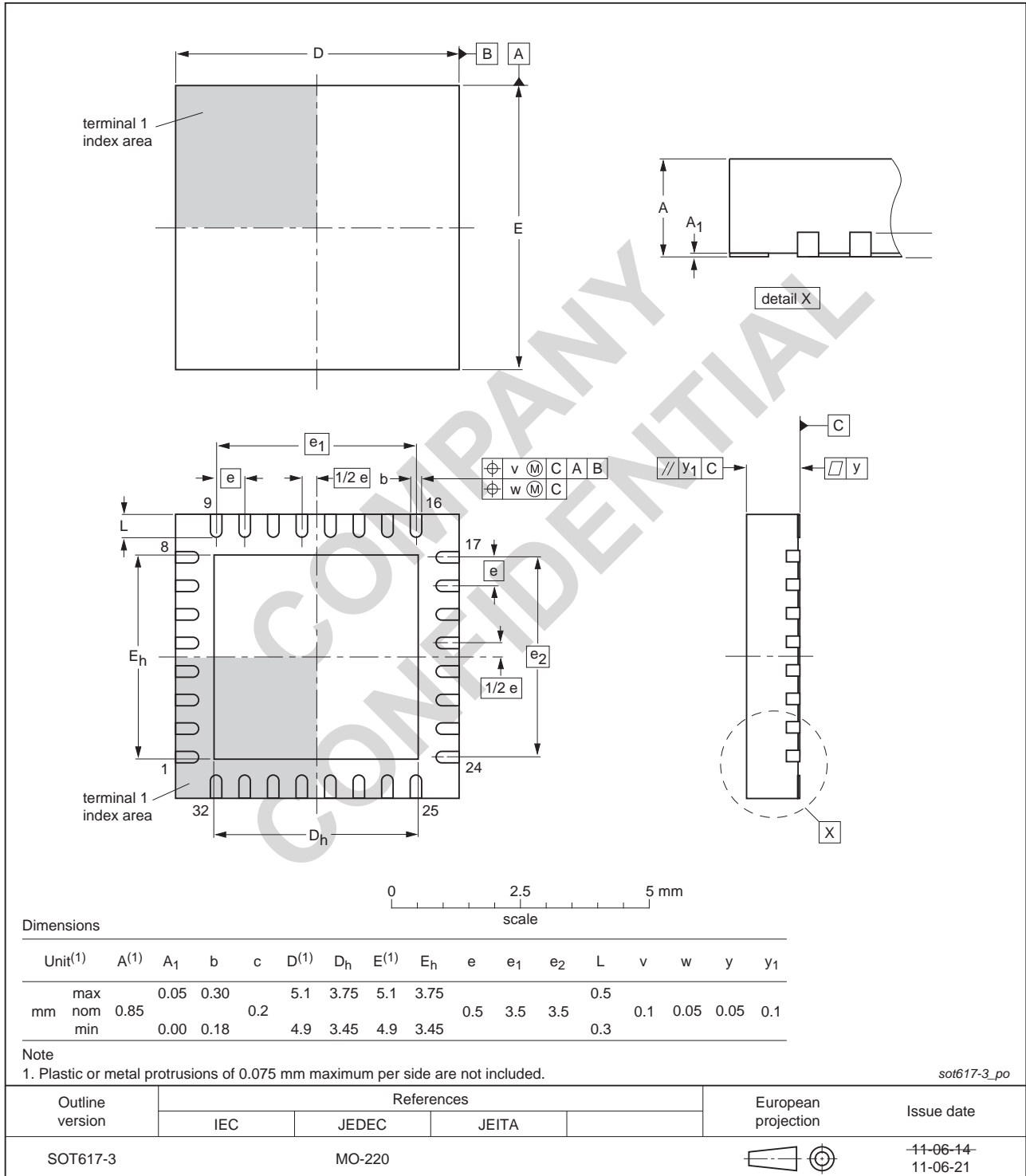
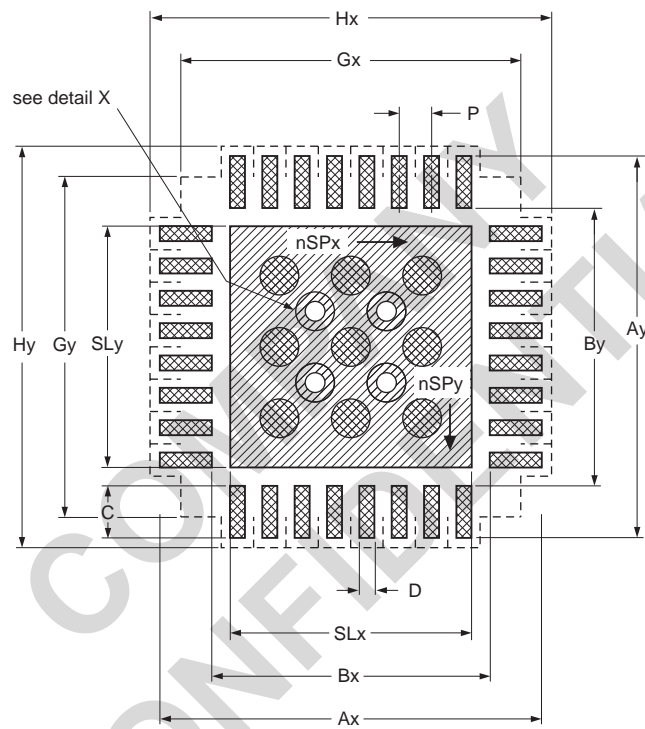


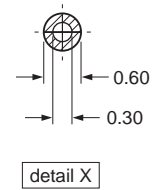
Fig 5. Package outline SOT617-3 (HVQFN32)

Footprint information for reflow soldering of HVQFN32 package

SOT617-3



- solder land
- solder paste
- occupied area



Dimensions in mm

P	Ax	Ay	Bx	By	C	D	Gx	Gy	Hx	Hy	SLx	SLy	nSPx	nSPy
0.5	5.95	5.95	4.25	4.25	0.85	0.27	5.25	5.25	6.2	6.2	3.75	3.75	3	3

Issue date ~~11-11-15~~
11-11-20

sot617-3_fr

Fig 6. Soldering footprint SOT617-3 (HVQFN32)

19. Soldering of SMD packages

This text provides a very brief insight into a complex technology. A more in-depth account of soldering ICs can be found in Application Note AN10365 "Surface mount reflow soldering description".

19.1 Introduction to soldering

Soldering is one of the most common methods through which packages are attached to Printed Circuit Boards (PCBs), to form electrical circuits. The soldered joint provides both the mechanical and the electrical connection. There is no single soldering method that is ideal for all IC packages. Wave soldering is often preferred when through-hole and Surface Mount Devices (SMDs) are mixed on one printed wiring board; however, it is not suitable for fine pitch SMDs. Reflow soldering is ideal for the small pitches and high densities that come with increased miniaturization.

19.2 Wave and reflow soldering

Wave soldering is a joining technology in which the joints are made by solder coming from a standing wave of liquid solder. The wave soldering process is suitable for the following:

- Through-hole components
- Leaded or leadless SMDs, which are glued to the surface of the printed circuit board

Not all SMDs can be wave soldered. Packages with solder balls, and some leadless packages which have solder lands underneath the body, cannot be wave soldered. Also, leaded SMDs with leads having a pitch smaller than ~0.6 mm cannot be wave soldered, due to an increased probability of bridging.

The reflow soldering process involves applying solder paste to a board, followed by component placement and exposure to a temperature profile. Leaded packages, packages with solder balls, and leadless packages are all reflow solderable.

Key characteristics in both wave and reflow soldering are:

- Board specifications, including the board finish, solder masks and vias
- Package footprints, including solder thieves and orientation
- The moisture sensitivity level of the packages
- Package placement
- Inspection and repair
- Lead-free soldering versus SnPb soldering

19.3 Wave soldering

Key characteristics in wave soldering are:

- Process issues, such as application of adhesive and flux, clinching of leads, board transport, the solder wave parameters, and the time during which components are exposed to the wave
- Solder bath specifications, including temperature and impurities

19.4 Reflow soldering

Key characteristics in reflow soldering are:

- Lead-free versus SnPb soldering; note that a lead-free reflow process usually leads to higher minimum peak temperatures (see [Figure 7](#)) than a SnPb process, thus reducing the process window
- Solder paste printing issues including smearing, release, and adjusting the process window for a mix of large and small components on one board
- Reflow temperature profile; this profile includes preheat, reflow (in which the board is heated to the peak temperature) and cooling down. It is imperative that the peak temperature is high enough for the solder to make reliable solder joints (a solder paste characteristic). In addition, the peak temperature must be low enough that the packages and/or boards are not damaged. The peak temperature of the package depends on package thickness and volume and is classified in accordance with [Table 16](#) and [17](#)

Table 16. SnPb eutectic process (from J-STD-020D)

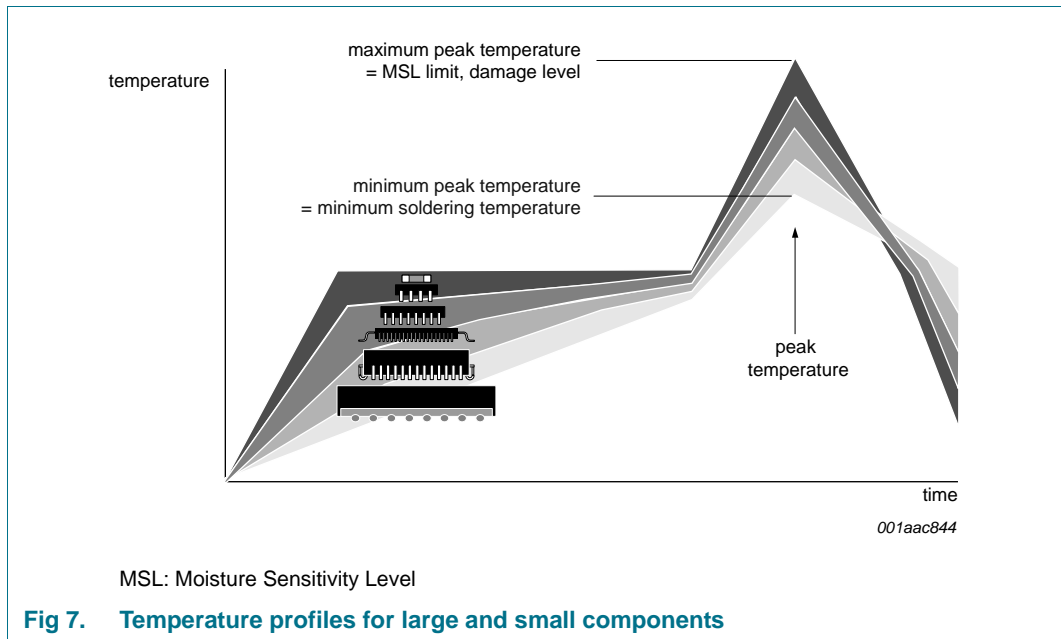
Package thickness (mm)	Package reflow temperature (°C)	
	Volume (mm ³)	
	< 350	≥ 350
< 2.5	235	220
≥ 2.5	220	220

Table 17. Lead-free process (from J-STD-020D)

Package thickness (mm)	Package reflow temperature (°C)		
	Volume (mm ³)		
	< 350	350 to 2000	> 2000
< 1.6	260	260	260
1.6 to 2.5	260	250	245
> 2.5	250	245	245

Moisture sensitivity precautions, as indicated on the packing, must be respected at all times.

Studies have shown that small packages reach higher temperatures during reflow soldering, see [Figure 7](#).



For further information on temperature profiles, refer to Application Note AN10365 “Surface mount reflow soldering description”.

20. Abbreviations

Table 18. Abbreviations

Acronym	Description
AC	Alternating Current
ADC	Analog-to-Digital Converter
AEC	Automotive Electronics Council
AGC	Automatic Gain Control
AM	Amplitude Modulation
BCK	Bit Clock
DAC	Digital-to-Analog Converter
DARC	DAta Radio Channel
DRM	Digital Radio Mondiale
ESD	ElectroStatic Discharge
FM	Frequency Modulation
FMSI	FM Stereo Improvement
GPIO	General Purpose Input/Output
HBM	Human Body Model
I ² C-bus	Inter-IC bus
I ² S	Inter-IC Sound
IC	Integrated Circuit
IEC	International Electrotechnical Commission
IF	Intermediate Frequency

Table 18. Abbreviations ...continued

Acronym	Description
I/O	Input/Output
I/Q	In-phase/Quadrature phase
JEDEC	Joint Electron Device Engineering Council
JEITA	Japan Electronics and Information Technology Industries Association
LNA	Low-Noise Amplifier
LO	Local Oscillator
LW	Long Wave
MPX	FM-Multiplex Signal
MSL	Moisture Sensitivity Level
MW	Medium Wave
OIRT	International Radio and Television Organisation (Organisation Internationale de Radiodiffusion et de Télévision)
PACS	Precision Adjacent Channel Suppression
PCB	Printed-Circuit Board
PI	Program Identification
PLL	Phase-Locked Loop
RBDS	Radio Broadcast Data System
RDS	Radio Data System
RF	Radio Frequency
RMS	Root-Mean-Square
RSSI	Received Signal Strength Indicator
SNR	Signal-to-Noise Ratio
SW	Short Wave
US	United States of America
USN	UltraSonic Noise
WAM	Wideband AM
WS	Word Select

21. Glossary

HD Radio™ — Technology upgrades broadcast radio from analog to digital

22. References

- [1] **UM10204; I²C-bus specification and user manual - v.5** — Official I²C Standard Document (available from NXP Semiconductors, International Marketing and Sales)
- [2] **IEC 60134** — Absolute Maximum Rating System
- [3] **AEC - Q100-004** — Automotive Electronics Council - IC Latch Up Test
- [4] **AEC - Q100-002** — Automotive Electronics Council - Human Body Model (HBM) Electrostatic Discharge (ESD) Test
- [5] **AEC - Q100-011** — Automotive Electronics Council - Charged Device Model (CDM) Electrostatic Discharge (ESD) Test
- [6] **Application note AN10365** — Surface mount reflow soldering description
- [7] **Application note AN11254** — TEF668X Application Note
- [8] **TEF668X User Manual** — Technical information

23. Revision history

Table 19. Revision history

Document ID	Release date	Data sheet status	Change notice	Supersedes
TEF668X v.6	20150703	Product data sheet	-	TEF668X v.5
Modifications:	<ul style="list-style-type: none"> • Data sheet Figure 4 "Schematic diagram" on page 22 updated 			
TEF668X v.5	20150421	Product data sheet	-	TEF668X v.4
Modifications:	<ul style="list-style-type: none"> • Data sheet update according to ROM code update V102 			
TEF668X v.4	20140115	Product data sheet	-	TEF668X v.3
Modifications:	<ul style="list-style-type: none"> • Type numbers TEF6687 and TEF6689 (FMSI) added • New Section added Section 17 "Package information" on page 24 			
TEF668X v.3	20130730	Product data sheet	-	TEF668X v.2
Modifications:	<ul style="list-style-type: none"> • Preliminary data sheet changed to Product data sheet 			
TEF668X v.2	20130709	Preliminary data sheet	-	TEF668X v.1
Modifications:	<ul style="list-style-type: none"> • Pins 12, 13, 14 and 15 changed • New text added to Section 17 "Package outline" 			
TEF668X v.1	20130422	Preliminary data sheet	-	-

24. Legal information

24.1 Data sheet status

Document status ^{[1][2]}	Product status ^[3]	Definition
Objective [short] data sheet	Development	This document contains data from the objective specification for product development.
Preliminary [short] data sheet	Qualification	This document contains data from the preliminary specification.
Product [short] data sheet	Production	This document contains the product specification.

[1] Please consult the most recently issued document before initiating or completing a design.

[2] The term 'short data sheet' is explained in section "Definitions".

[3] The product status of device(s) described in this document may have changed since this document was published and may differ in case of multiple devices. The latest product status information is available on the Internet at URL <http://www.nxp.com>.

24.2 Definitions

Draft — The document is a draft version only. The content is still under internal review and subject to formal approval, which may result in modifications or additions. NXP Semiconductors does not give any representations or warranties as to the accuracy or completeness of information included herein and shall have no liability for the consequences of use of such information.

Short data sheet — A short data sheet is an extract from a full data sheet with the same product type number(s) and title. A short data sheet is intended for quick reference only and should not be relied upon to contain detailed and full information. For detailed and full information see the relevant full data sheet, which is available on request via the local NXP Semiconductors sales office. In case of any inconsistency or conflict with the short data sheet, the full data sheet shall prevail.

Product specification — The information and data provided in a Product data sheet shall define the specification of the product as agreed between NXP Semiconductors and its customer, unless NXP Semiconductors and customer have explicitly agreed otherwise in writing. In no event however, shall an agreement be valid in which the NXP Semiconductors product is deemed to offer functions and qualities beyond those described in the Product data sheet.

24.3 Disclaimers

Limited warranty and liability — Information in this document is believed to be accurate and reliable. However, NXP Semiconductors does not give any representations or warranties, expressed or implied, as to the accuracy or completeness of such information and shall have no liability for the consequences of use of such information. NXP Semiconductors takes no responsibility for the content in this document if provided by an information source outside of NXP Semiconductors.

In no event shall NXP Semiconductors be liable for any indirect, incidental, punitive, special or consequential damages (including - without limitation - lost profits, lost savings, business interruption, costs related to the removal or replacement of any products or rework charges) whether or not such damages are based on tort (including negligence), warranty, breach of contract or any other legal theory.

Notwithstanding any damages that customer might incur for any reason whatsoever, NXP Semiconductors' aggregate and cumulative liability towards customer for the products described herein shall be limited in accordance with the *Terms and conditions of commercial sale* of NXP Semiconductors.

Right to make changes — NXP Semiconductors reserves the right to make changes to information published in this document, including without limitation specifications and product descriptions, at any time and without notice. This document supersedes and replaces all information supplied prior to the publication hereof.

Suitability for use in automotive applications — This NXP Semiconductors product has been qualified for use in automotive applications. Unless otherwise agreed in writing, the product is not designed, authorized or warranted to be suitable for use in life support, life-critical or safety-critical systems or equipment, nor in applications where failure or malfunction of an NXP Semiconductors product can reasonably be expected to result in personal injury, death or severe property or environmental damage. NXP Semiconductors and its suppliers accept no liability for inclusion and/or use of NXP Semiconductors products in such equipment or applications and therefore such inclusion and/or use is at the customer's own risk.

Applications — Applications that are described herein for any of these products are for illustrative purposes only. NXP Semiconductors makes no representation or warranty that such applications will be suitable for the specified use without further testing or modification.

Customers are responsible for the design and operation of their applications and products using NXP Semiconductors products, and NXP Semiconductors accepts no liability for any assistance with applications or customer product design. It is customer's sole responsibility to determine whether the NXP Semiconductors product is suitable and fit for the customer's applications and products planned, as well as for the planned application and use of customer's third party customer(s). Customers should provide appropriate design and operating safeguards to minimize the risks associated with their applications and products.

NXP Semiconductors does not accept any liability related to any default, damage, costs or problem which is based on any weakness or default in the customer's applications or products, or the application or use by customer's third party customer(s). Customer is responsible for doing all necessary testing for the customer's applications and products using NXP Semiconductors products in order to avoid a default of the applications and the products or of the application or use by customer's third party customer(s). NXP does not accept any liability in this respect.

Limiting values — Stress above one or more limiting values (as defined in the Absolute Maximum Ratings System of IEC 60134) will cause permanent damage to the device. Limiting values are stress ratings only and (proper) operation of the device at these or any other conditions above those given in the Recommended operating conditions section (if present) or the Characteristics sections of this document is not warranted. Constant or repeated exposure to limiting values will permanently and irreversibly affect the quality and reliability of the device.

Terms and conditions of commercial sale — NXP Semiconductors products are sold subject to the general terms and conditions of commercial sale, as published at <http://www.nxp.com/profile/terms>, unless otherwise agreed in a valid written individual agreement. In case an individual agreement is concluded only the terms and conditions of the respective agreement shall apply. NXP Semiconductors hereby expressly objects to applying the customer's general terms and conditions with regard to the purchase of NXP Semiconductors products by customer.

No offer to sell or license — Nothing in this document may be interpreted or construed as an offer to sell products that is open for acceptance or the grant, conveyance or implication of any license under any copyrights, patents or other industrial or intellectual property rights.

Export control — This document as well as the item(s) described herein may be subject to export control regulations. Export might require a prior authorization from competent authorities.

Quick reference data — The Quick reference data is an extract of the product data given in the Limiting values and Characteristics sections of this document, and as such is not complete, exhaustive or legally binding.

Translations — A non-English (translated) version of a document is for reference only. The English version shall prevail in case of any discrepancy between the translated and English versions.

24.4 Licenses

ICs with HD Radio functionality

NXP Semiconductors ICs with HD Radio functionality are manufactured under license from iBiquity Digital Corporation. Sale or distribution of equipment that includes this device requires a license, which may be obtained at: iBiquity Digital Corporation, 6711 Columbia Gateway Drive, Suite 500, Columbia MD 21046, USA. Telephone: +1 (443) 539 4290, fax: +1 (443) 539 4291, e-mail: info@ibiquity.com.

24.5 Trademarks

Notice: All referenced brands, product names, service names and trademarks are the property of their respective owners.

I²C-bus — logo is a trademark of NXP Semiconductors N.V.

HD Radio — is a trademark of iBiquity Digital Corporation.

HD Radio — logo is a registered trademark of iBiquity Digital Corporation.

25. Contact information

For more information, please visit: <http://www.nxp.com>

For sales office addresses, please send an email to: salesaddresses@nxp.com

COMPANY
CONFIDENTIAL

26. Contents

1	General description	1	21	Glossary	30
2	Features and benefits	1	22	References	31
3	Applications	2	23	Revision history	31
4	Functionality	3	24	Legal information	32
5	Ordering information	3	24.1	Data sheet status	32
6	Block diagram	4	24.2	Definitions	32
7	Pinning information	5	24.3	Disclaimers	32
7.1	Pin description	6	24.4	Licenses	33
8	Functional description	7	24.5	Trademarks	33
8.1	FM front end to IF ADC input	7	25	Contact information	33
8.2	AM front end to IF ADC input	8	26	Contents	34
8.3	Tuning system	8			
8.4	IF ADC	8			
8.5	Radio processing	8			
8.5.1	AM mode features	9			
8.5.2	FM mode features	9			
8.5.3	RDS/RBDS	10			
8.5.3.1	RDS demodulator	10			
8.5.3.2	RDS decoder	10			
8.5.4	Digital radio interface	10			
8.6	Audio input	10			
8.7	Audio processing	10			
8.8	Audio output	11			
8.9	Crystal oscillator and external clock interface	11			
8.10	I ² C-bus interface	11			
9	I²C-bus protocol	11			
9.1	Write mode	11			
9.2	Read mode	11			
10	Overview of commands	13			
11	Limiting values	16			
12	Thermal characteristics	17			
13	Static characteristics	17			
14	Dynamic characteristics	18			
15	Application information	22			
16	Test information	24			
16.1	Quality information	24			
17	Package information	24			
18	Package outline	25			
19	Soldering of SMD packages	27			
19.1	Introduction to soldering	27			
19.2	Wave and reflow soldering	27			
19.3	Wave soldering	27			
19.4	Reflow soldering	28			
20	Abbreviations	29			

Please be aware that important notices concerning this document and the product(s) described herein, have been included in section 'Legal information'.

© NXP Semiconductors N.V. 2015.

All rights reserved.

For more information, please visit: <http://www.nxp.com>

For sales office addresses, please send an email to: salesaddresses@nxp.com

Date of release: 3 July 2015

Document identifier: TEF668X